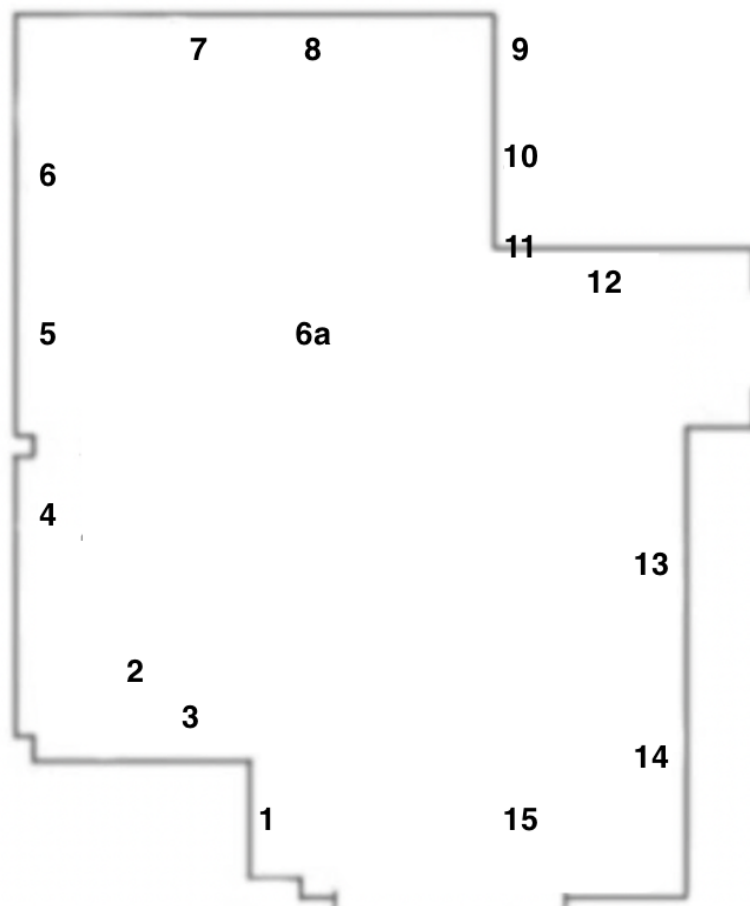


PADA 034

Curated by Thyra Dragseth



1. Anthony Warnick, **Ongoing Revolution**, bandeira verde-rubra, grelha de sardinha, 37 x 20 x 20cm.
2. Sharon Haward, **System Solutions**, aluminum and wire, 440 x 330 x 120cm.
3. Anthony Warnick, **Criamos O Que Não Temos**, toner print on bond paper (open edition), 30 x 42cm.
4. Shea Chang, **Discobola Now**, acrylic ink and gouache on arches paper, 175 x 61cm flat / 23 x 61cm rolled.
5. Isabelle Carr, **Weight**, oil and coloured pencil on canvas, 105 x 155cm.
- 6 + 6a: Kaija Hinkula, **Fixing up My Car**, canvas strapping, found object, 2 pieces, 30x15cm, 42x24cm & found object, spray, cotton, metal bracket, 74x74x18cm.
7. Shea Chang, **A tuning, A turning**, acrylic ink and gouache on arches paper, 61 x 91.5cm.
8. Shea Chang, **New Chance**, acrylic ink and gouache on arches paper, 61 x 92cm.
9. Irene Anguita Cuadra, **Laying down** (series), oil on paper, 29,7 x 21cm.
10. Alicia Little, **Sewn Drawing**, oil pastel and acrylic on canvas, thread, 91 x 111cm.
11. Anthony Warnick, **Nós**, tarpaulin, cotton canvas, acrylic paint, PVC, terracotta, 226 x 11 x 213cm.
12. Amelie Peace, **Pressed Hand**, acrylic on canvas, 195 x 175cm.
13. Isabelle Carr, **Something Easy**, oil, acrylic, charcoal, colored pencil on canvas, 96 x 125cm.
14. Irene Anguita Cuadra, **Hubba bubba**, oil on canvas, 195 x 195cm.
15. Alicia Little, **Soft Tissue**, wire mesh, paper, masking tape, latex paint, fabric, thread, found plaster board, 30 x 30 x 135cm.

Alicia Little (b.1990) is a lecturer, curator and multidisciplinary artist from Ohio, currently based in Michigan.

"Rooted in feminist sculpture and painting, my work focuses on formal properties to create spatial relationships between color, shape and form that relates to the body and responds to interior space. I work in different modes including drawing, painting, video, sculpture, and installation. Textiles, found objects, plaster, and paint are often materials that I use to create provisional tableaux that get assembled and arranged based upon the space they are in. I seek out mass produced objects and their waste materials for formal value, leaving behind utilitarian function to focus on the tactile and visual qualities."

Amelie Peace (b.1997) is an artist from London.

"My practice explores the complexities of unity and examines people's need for touch, and how body language influences the way we communicate with one another. I explore what it means to have a body, to share that body, and how each exchange with another person alters one's sense of their own physical self. My fascination with hands is a constant in my work. I explore them as forms that touch and feel, tools of creation, and instruments of executive action. Hands allow us to manipulate the world around us and at the same time keep us connected with one another. They act as stepping stones guiding the viewer through the many storylines in the paintings. The intensity of colour in the work is used as a megaphone to emphasise the themes I explore in my practice. My imagery always strives to create an equilibrium, walking the line between softness and cruelty. What it means to speak without words, the power that can be found in the unspoken language of the gestural. In each painting, the fourth wall is broken, which entices the viewer to become part of the theatrical puzzles I put together in my pursuit to depict human emotion."

Anthony Warnick (b. 1983) is a conceptual artist from Manhattan, Kansas.

His research-based practices plays with language as a form and material with formal considerations following from the forms present within whichever social system I am presently engaging. Most recently, Warnick's practices has been focused on the systems of news distribution and consumption resulting in series of prints, a comprehensive archive of altered photographs, web-based generative works, video installations, and sculptural works. Exemplified in a clear billboard to web-based tool generating new Mad Libs bases upon the current New York Times Headlines or cacophonous video work combining a myriad of 24 hour news stations.

Irene Anguita (b. 1997) is a painter from Córdoba, Spain.

"My paintings are a way of exploring the youth environment surrounding me. Three years ago I began painting parties which turned into an ongoing interest in analyzing contemporary youth. Identity as an issue and the consequences of a hostile society are themes I regularly go back to. At the same time, I try to explore the codes of representation in figurative painting by referring to Art History and mainstream culture."

Isabelle Carr (b. 1997) is a multidisciplinary visual artist from Dorset, England, currently living in London, England.

Isabelle's work makes visual connections between the shapes and colours found in our surroundings and belongings throughout time, exploring how, as individuals, our sense of belonging and our everyday rituals continue to be so closely entwined with the spaces we inhabit and the objects we treasure.

Kaija Hinkula (b.1984) lives and works in Oulu, Finland.

She works in the field of expanded painting, combining methods of sculpture and time and space art with tradition of painting. Hinkula uses different elements, as oil, spray, and readymade objects transforming them into colourfull installations as part of the world's playground. Works constructed by compiling everyday industrial material creates scene where reality and fantasy meet.

Sharon Haward (b.1961) is an artist living and working in Hastings, UK.

"My practice is essentially a sculptural one that is informed by architecture and its impact on the human form. I move between making small scale objects and larger scale interventions that create direct physical relationships with the viewer and the surrounding environment. These installations and interventions are often temporary and fleeting, dependent on site-specific cues. I enjoy the 'in the moment' activation of space and like directing the objects in response to the space or site I am working in. I use a range of resistant and malleable materials - wood, fabric, plaster and found materials to create forms that disrupt a sense of order and balance. Each piece conveys ideas and sensations activated in the body as it inhabits or moves through a place or space, forging relationships to scale, form, light, surface, gender, history and place."

Shea Chang (b. 1980 in Vancouver) is a visual artist and educator working in cross-bred processes of drawing, painting, and sculpture. She is currently based in Hamilton, Canada, and is an Assistant Professor of Illustration at OCAD University.

"Through engagement with chance and systems of control, I generate visual worlds through processes of mutation, mimicry, delineation, and dissolution. Uncanny amalgamations of optical, physical, and material are brought together to question the thresholds between all things, organisms, animals, and humans, uncovering hidden entanglements in which we all exist."