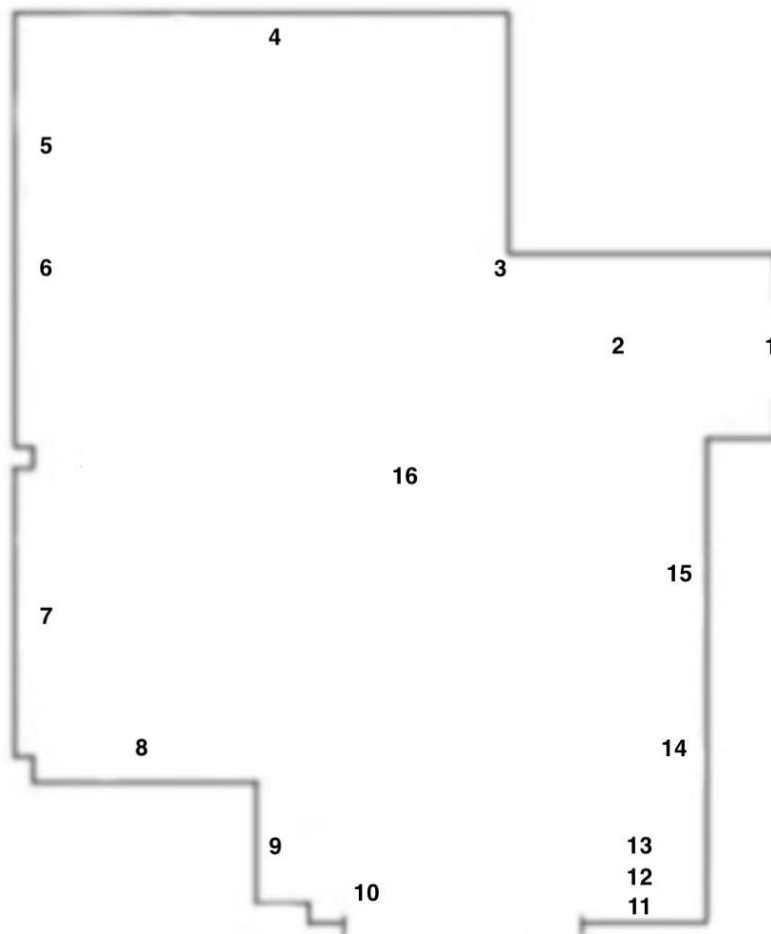


# PADA 032

Curated by Susana Pomba



1. Nicole Ross, **Cute Jutter**, packaging, paper, 15 x 30cm.
2. Nadine Shaban, **Nephele**, netting, 120 x 150cm.
3. Nicole Ross, **Seep Cinch**, brackets, 10 x 10 x 10cm.
4. Michelle Eistrup, **Charging change 1**, colour paper. 600 x 272cm.
5. Michelle Eistrup, **Charging change 2**, Epson mat print and masonite, 70 x 40cm each. Participants: Gio Lourenço, and Dora Cruz.
6. Michelle Eistrup, **Charging change 2**, Epson mat print and masonite, 23 x 15cm each. Participant: Gio Lourenço.
7. Julia Sjölin, **Second (call)**, oil on canvas, 220 x 240cm.
8. Johan Buskov Romme, **Earth skin**, soil, fiberglass, resin, 160 x 140cm.
9. Luisa-Maria MacCormack, **Untitled**, Graphite on tracing paper, glass, silvering, lizard skin, 50 x 40cm.
10. Charlotte Kidger, **Now you see me**, rubber electrical cables, 370 x 60cm.
11. Josep Santamaria, **Variable II**, acrylic paint on board, 30 x 20cm.
12. Josep Santamaria, **Variable I**, acrylic paint on board, 30 x 20cm.
13. Josep Santamaria, **Variable III**, acrylic paint on board, 30 x 20cm.
14. Josep Santamaria, **Observatorio / monumento**, acrylic on canvas, 149 x 110cm.
15. Kimi Zoet, **Untitled**, wood burner on plywood, 126 x 93cm.
16. Nicole Ross, **Its insides foment a hearth gelatinously**, jute, glass, 100 x 200 x 200cm.

**Nadine Shaban** (b.1989), is an artist living and working in the UK.

“Making and the intimacy I have with material offers a precious retreat and is a way for me to understand and express the discomfort and complexities that I feel within myself and the world around me. My work explores how the walls we build can protect, trap and create a disguise through which to escape. The everyday materials that I manipulate tend to have an industrial and synthetic quality providing a concrete way to express inner mental states. Through movement and interactions with the body the surfaces I create transform and come alive.”

**Luisa-Maria MacCormack** (b. 1990) is a British visual artist based in London, UK.

She studied at the Royal Drawing School in 2014, and most recently completing her Masters Degree in Fine Art with City and Guilds of London Art School. A founding member of the London Drawing Group, Luisa teaches both Drawing, and Feminist History of Art classes in venues across London.

Her current practice focuses on the more-than-human relationships we create with the natural world, exploring our stunted dialogue with the non-human, and attempting to collapse our socially constructed separate notions of human and animal.

**Julia Sjölin** (b. 1992) is a Swedish visual artist working based in Berlin, Germany.

She holds an MFA from Malmö Art Academy (2020) and a BFA from Umeå Academy of Fine Arts (2018). Julia's works in video, painting and text are moving between experience and the symbolic. Her paintings are made on the floor in thin layers of oil. Between the layers of paint, dust, hair, glass and insects get stuck. Similarly behind-the-scenes and 'mistakes' seep into her videos. By making the construction of images, language and time Julia seeks to display and dismantle the mechanisms creating and maintaining them.

**Johan Buskov Romme** (b. 1984) is a Danish artist based internationally.

“My arts practice seeks to understand material cognition as fluctuating phenomena. My work engages us on multiple levels of scales and creates contemplation within these different dimensions. There is an intent to invigorate inner images of materials as animate phenomena caused by usage and general relevance to human existence. The aim is to enable audiences to understand the inherent relativity of how the physical realm appears and is processed by our perceptive filters and imagination.”

**Charlotte Kidger** (b. 1992) is a London based UK Artist.

Kidger graduated from Leeds College of Art (2014) and Central Saint Martins (2018) and has a background in Colour and Material Design. Her practice is led with a hands-on approach to investigating how industrial waste materials can be reprocessed and transformed into sculptural and functional objects. As an experimental material-led designer her work is driven by the urge and curiosity to transform often unwanted and valueless materials into desirable and functional objects.

**Kimi Zoet** (b.1997) is an artist based in London.

Through drawing, collecting objects, installation, and creative writing, she constructs imaginary narratives that often reflect events occurring in her own life.

**Nicole Ross** (b. 1993) is a multidisciplinary American artist currently based in Portugal.

Her practice places poetic material surrogates in positions of desire and tension. She works in sculpture, digital, renderings, text and time-based media.

**Josep Santamaria** (b.1989) is a painter from Mallorca, Spain.

His practice focuses on geometric abstraction as a way to build up new dimensions that search unity and balance. Conflating painting and drawing processes, he creates a variety of geometric forms that follows a compositional order based on logic and calculation principles. Moved by aesthetic motivations, his work draws upon a range of influences taken from Constructivism, Suprematism or Neoplasticism avant-garde movements, among others. Through his practice, Santamaria seeks to evidence his ongoing interest in exploring formal concerns such as movement, rhythm, dimension, proportion and chromatic balance. Thus, he invents new shapes that are combined infinitely, generating structures that can remind of fictional constructions or futurist architectures. These structures are also placed on an infinite dark space defined by weightlessness and the absence of perspective, resembling stars from an unknown galaxy.

**Michelle Eistrup** (b. 1969) is a visual artist and arts producer who lives in Copenhagen, Denmark.

Eistrup's art incorporates themes of identity, corporeality, faith, memory, and postcolonialism. Her transnational background (Danish, Jamaican, American) is sometimes a point of departure. She traverses varied artistic expressions that include photography, drawing, video, sound, and performance, all integrated in practice, led by the spirit and a strong belief in the transformative potential of collectivity. Rooted in a vibrant global arts community, she has exhibited internationally and organized events that facilitate in-depth dialogue and research between artists, writers, and curators, for the overall purpose of encouraging a more integrated, sensitive, and equitable creative exchange. Eistrup has exhibited in Europe, the Caribbean, Asia, and Africa, including institutions such as Aarhus Art Museum; AGWA, Art Gallery of Western Australia (Perth); Arnolfini (Bristol); Kunsthall Charlottenborg (Copenhagen); Galleri Image (Aarhus); Momentum: The Nordic Biennial of Contemporary Art (Moss); The Japanese Palace (Dresden); Haugar Vestfold Kunstmuseum (Tønsberg); Moderna Museet (Stockholm); Sparwasser HQ (Berlin); Pingyao Photography Festival (Shanxi); The Taitu International Art Center (Addis Ababa), and The National Gallery of Jamaica (Kingston). Between 2012-2018 she curated *BAT, Bridging Art and Text* (workshop and seminar) with coordinator Annemari B. Clausen and published the 3 volume, 800-page publication *BAT* in 2017. Eistrup also co-curated *NotAboutKarenBlixen* with Curator Brooke Minto and *Face à Face* with curator and Artist Amadou Kane Sy for *My World IMAGES Festival* 2010.